

DRIVE WITH PRIDE

JAGUAR DIPLOMATIC SALES PROGRAMME



THE ART OF PERFORMANCE



WELCOME TO THE JAGUAR DIPLOMATIC SALES PROGRAMME

We understand that diplomats must always represent their country in the best light. Our Diplomatic Sales Programme can help you do just that. Alongside preferential rates, we offer continuous support through our global network of local retailers, with everything from choosing your tailored Jaguar car, to expert servicing and maintenance. Making it easier for you to drive a Jaguar – a symbol of excellence worldwide.

You'll see from this brochure that this is a very exciting time for us, with the launch of a succession of new vehicles ideal for diplomats, including the I-PACE Concept – a preview of Jaguar's first all-electric car.

Throughout the world, Jaguar vehicles communicate excellence, distinction, British heritage and prestige. Perhaps that's part of the reason why many diplomats around the globe have chosen Jaguar vehicles for their overseas posting.

With such a comprehensive range of distinctive products, alongside our team of experienced specialists, committed to delivering excellent customer service, it's time to seriously consider us for your next vehicle purchase. Please contact one of our Jaguar Diplomatic Sales Specialists in your country for more information.

Kind regards

A handwritten signature in dark ink, appearing to read 'Ken Forbes', written in a cursive style.

Ken Forbes

Global Fleet & Business Director
Jaguar Land Rover



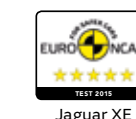
WHY CHOOSE JAGUAR?

- Distinctive presence on the road
- A wide range of vehicles, with 44 model derivatives* currently below 130/km CO₂
- State-of-the-art Ingenium engines, which improve performance, efficiency and running costs
- Advanced in-car technology and connected car services that empower the driver
- Competitive Total Cost of Ownership
- Strong Residual Values
- Special discounts available to diplomatic customers, on our entire range of vehicles**

WE'RE AWARD-WINNING

It's always great to be recognised for your work. Over the years Jaguar has won numerous awards for exceptional design, reliability, performance and customer satisfaction.

These include:



*44 models as of March 2017. Listing based on EU offer, all models and specifications are market dependent, please check with your local retailer. **Market dependent, please refer to your Jaguar Diplomatic Specialist for more information

WHO IS ELIGIBLE?

The benefits of the Jaguar Diplomatic Sales Programme are available exclusively for serving diplomats with evidence of diplomatic status, posted outside their country of residence, or an employee of an international organisation with tax-free status.

Who Qualifies		Evidence Required
Diplomat	Serving their country Overseas	One of the following: – Diplomatic passport – Letter of Accreditation
International Organisations	A member of a qualifying organisation with tax free status	One of the following: – United Nations laissez-passer – United Nations passport – Ministerial passport – NATO ID card or service passport – Letter of Accreditation

To find out which international organisations qualify for the Jaguar Diplomatic Programme please visit jaguar.com/diplomat/eligibility





PERSONAL CUSTOMER CARE

Our highly trained Jaguar Diplomatic Sales Specialists will be by your side from day one and throughout your ownership, to make the process of ordering and maintaining your Jaguar as simple as possible.

ONE POINT OF CONTACT

As a customer, you'll be given a dedicated Diplomatic Specialist who will assist you with every part of the decision making process.

SERVICE PLANS

Fixed price service plans cover the cost of routine servicing for the length of your chosen plan and provide reassurance that the vehicle is performing at its best. They also help to optimise the vehicle's Residual Value*.

ROADSIDE ASSISTANCE

A comprehensive, tailored programme for complete and best-in-class emergency cover and support. We can help in all motoring emergencies from breakdowns to accidents and ensure that your journeys keep running as quickly and smoothly as possible, whatever the circumstances*.

EXTENDED WARRANTY

Once your Manufacturer Warranty expires, we offer an extended warranty for longer lasting peace of mind.

ACCIDENT SERVICES

We'll go the extra mile to get drivers back behind the wheel quickly. We use only Jaguar Approved Body and Paint Centres and ensure vehicles are returned in a pristine condition.

JAGUAR CARE

Jaguar Care makes owning a Jaguar easier than ever before – bringing peace of mind by eliminating scheduled maintenance costs for the first three years of ownership, regardless of mileage (excluding wear and tear).**

JAGUAR ELITE CARE

Jaguar EliteCare offers a best-in-class coverage* package including five years/60,000 miles of limited warranty and complimentary scheduled maintenance. Plus a suite of connectivity services and roadside assistance, that ensures you and your Jaguar are looked after 365 days of the year.

*Please check with your local retailer for further details on service plans and roadside assistance. **Jaguar Care available across most European markets excluding UK, Switzerland and Turkey, please check with your local retailer for market coverage and optional service plan availability. *Class is cars sold by luxury automobile brands and claim is based on total package of warranty, maintenance and other coverage programs. For complete details regarding Jaguar EliteCare coverage, please visit jaguarusa.com, call 1.800.4. JAGUAR or visit your local Jaguar Retailer.

WHAT IS INGENIUM?

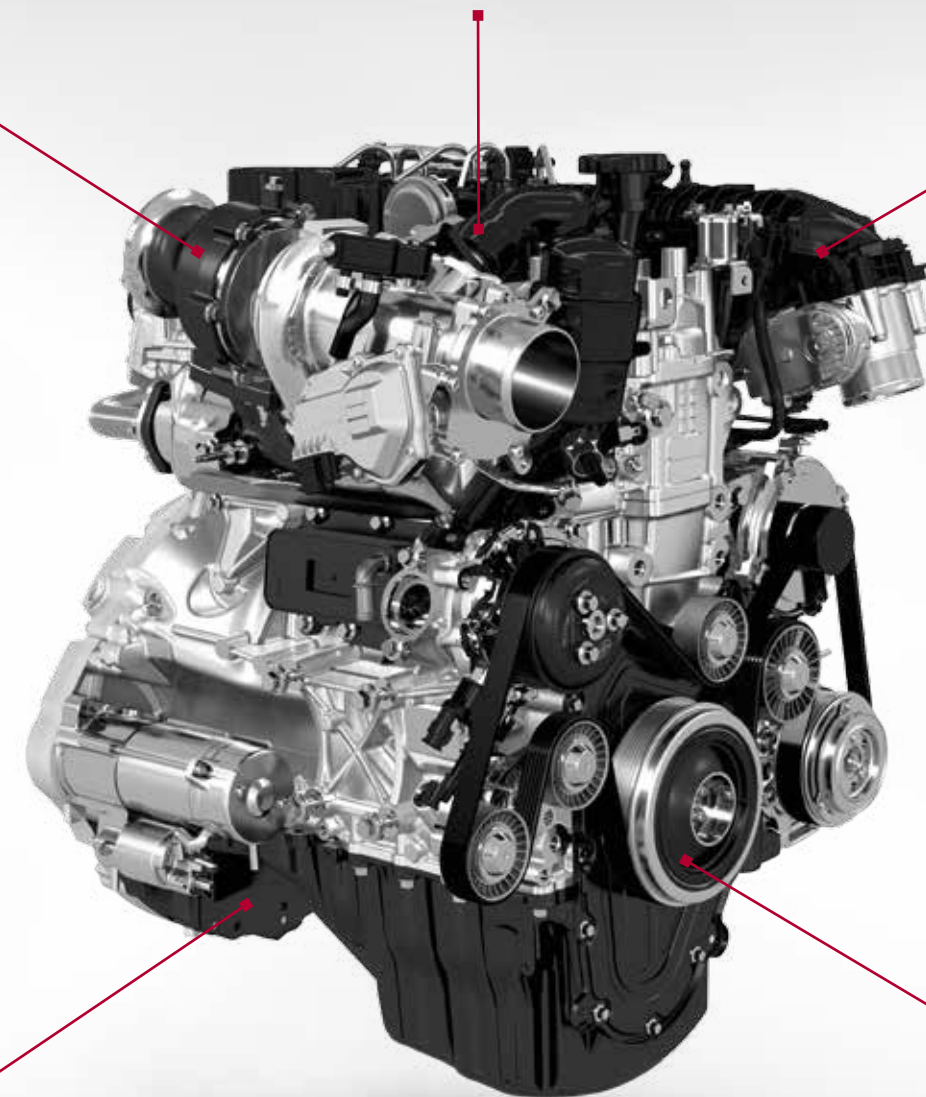
Simply put, Ingenium is the future of Jaguar engines.

Ingenium has been developed as a modular family of powerful, efficient and refined all-aluminum petrol and diesel engines. Designed and developed in the UK, by some of the world's finest engineers, Ingenium engines were built to maximise performance, while at the same time driving down running costs, with impressive fuel economy and low CO₂ emissions.

As well as complying with the latest Euro 6 emissions standards, the state-of-the-art modular Ingenium engines have the flexibility to integrate future technology advances and regulation changes.

Already, Ingenium engines have been introduced to the Jaguar XE, XF and F-PACE. They will also feature in many of our future models.

INGENIOUS



OUR MOST FUEL-EFFICIENT ENGINES EVER
Can achieve up to 75.0mpg (3.8l/100km) (combined cycle)

ENHANCED PERFORMANCE
Ingenium delivers impressive torque
for quicker acceleration

ENVIRONMENTALLY FRIENDLY
Lower emissions including
CO₂ and nitrogen oxides

SMOOTH AND QUIET DRIVE
Offers an enhanced driving experience
thanks to a lighter engine

COST-EFFECTIVE
Impressive fuel efficiency and
reduced CO₂ emissions means less
expenditure on fuel and tax,
plus extended service intervals

INGENIUM



THE JAGUAR RANGE

Agile and powerful; sleek and seductive; confident and instinctive – discover how the assertive style of our award-winning, efficient and dynamic cars can help you make every impression count, and every journey become a pleasure.



XE

The most advanced, efficient and refined sports saloon that Jaguar has ever produced.

KEY STANDARD FEATURES

- 8 inch Touch-screen with Touch infotainment system
- Jaguar Sound System (80W) with 6 speakers
- Autonomous Emergency Braking with Lane Departure Warning
- Torque Vectoring by Braking

KEY OPTIONAL FEATURES

- 10.2 inch Touch-screen with Touch Pro infotainment system
- Meridian™ Digital Surround Sound System (825W) with 17 speakers*
- All Wheel Drive system with Intelligent Driveline Dynamics**
- Head-Up Display

**FAST FACTS: 2.0 LITRE 4 CYLINDER 163PS
E-PERFORMANCE DIESEL**



CO₂ emissions
99g/km



0-100km/h/0-60mph
8.4/7.9sec



Top speed (km/h/mph)
227/141



Engine Capacity
1,999cc



Fuel economy†
3.8l/100km/75.0mpg



Dimensions†† (mm) (LHW)
4,672 x 1,416 x 2,075



Power (kW/PS)
120/163

Figures shown are for manual transmission. All information is market and model dependent. Please consult your retailer for availability. Meridian is a registered trademark of Meridian Audio Ltd. *Only available with Touch Pro. **Engine dependent. †Fuel economy figure combined cycle. ††Overall width including mirrors.



XF

With distinctive design, dynamic drive and state-of-the-art technologies, XF is a luxury business saloon like no other.

KEY STANDARD FEATURES

- Autonomous Emergency Braking
- 8 inch Touch-screen with Touch infotainment system
- Lane Departure Warning
- Torque Vectoring by Braking

KEY OPTIONAL FEATURES

- Meridian™ Digital Surround Sound System (825W) with 17 speakers*
- 10.2 inch Touch-screen with Touch Pro infotainment system
- Adaptive Cruise Control with Queue Assist and Intelligent Emergency Braking
- Traffic Sign Recognition and Adaptive Speed Limiter

FAST FACTS: 2.0 LITRE 4 CYLINDER 163PS E-PERFORMANCE DIESEL



CO₂ emissions
104g/km



0-100km/h/0-60mph
8.7/8.2sec



Top speed (km/h/mph)
229km/h/142mph



Engine Capacity
1,999cc



Fuel economy**
4.0l/100km/70.6mpg



Dimensions† (mm) (LHW)
4,954 x 1,457 x 2,091



Power (kW/PS)
120/163

Figures are shown for manual transmission. All information is market and model dependent. Meridian is a registered trademark of Meridian Audio Ltd. *Only available with Touch Pro. **Fuel economy figure combined cycle. †Overall width including mirrors.



F-PACE

Jaguar’s first performance SUV offers a unique combination of F-TYPE inspired exterior design and sporty handling, with impressive efficiency and a spacious interior.

KEY STANDARD FEATURES

- 8 inch Touch-screen with Touch infotainment system
- Rear Parking Aid
- Autonomous Emergency Braking with Lane Departure Warning
- All Surface Progress Control (automatic transmission only)

KEY OPTIONAL FEATURES

- 10.2 inch Touch-screen with Touch Pro infotainment system
- Meridian™ Digital Surround Sound System (825W) with 17 speakers
- All Wheel Drive system
- Adaptive Dynamics

FAST FACTS: INGENIUM 2.0 LITRE 4 CYLINDER 163PS
E-PERFORMANCE TURBOCHARGED DIESEL RWD



CO₂ emissions
126*g/km



0-100km/h/0-60mph
10.2/9.7sec



Top speed (km/h/mph)
195/121



Engine Capacity
1,999cc



Fuel economy**
4.8/100km/59.2mpg



Dimensions* (mm) (LHW)
4,746 x 1,693 x 2,175



Power (kW/PS)
120/163

Figures are shown for manual transmission. All information is market and model dependent. Please consult your retailer for availability. Meridian is a registered trademark of Meridian Audio Ltd. *Figure refers to cars fitted with 235/65 R18 tyres on Style 1021 or Style 1022 wheels. **Fuel economy figure combined cycle. *Overall width including mirrors. Height figure refers to cars with sunroof open.



XJ

XJ defines what a luxury car should be: beauty, innovation and all-round refinement.

KEY STANDARD FEATURES

- Satellite Navigation System
- Jaguar Sound System (250W)
- 12.3 inch Interactive Driver Display
- 8 inch Touch-screen with InControl Touch Pro

KEY OPTIONAL FEATURES

- Meridian™ Reference 1300W* Sound System with 26 speakers
- InControl Connect Pro
- Rear Seat Entertainment system with 8 inch screens
- Four-Zone Automatic Climate Control

FAST FACTS: 3.0 LITRE V6 300PS DIESEL STANDARD WHEELBASE



CO₂ emissions
from 149g/km



0-100km/h/0-60mph
6.2/5.9



Top speed (km/h/mph)
250/155



Engine Capacity
2,993cc



Fuel economy**
5.7l/100km/49.6mpg



Dimensions† (mm) (LHW)
5,130 x 1,460 x 2,105



Power (kW/PS)
250/340

All information is market and model dependent. All figures quoted are with Intelligent Start/Stop system. Meridian is a registered trademark of Meridian Audio Ltd. *0.2% THD (Total Harmonic Distortion). **Fuel economy figure combined cycle. †Overall width including mirrors.



F-TYPE

Powerful, agile and utterly distinctive, F-TYPE is a true successor to the legendary E-Type and the latest in a distinguished bloodline of Jaguar sportscars.

KEY STANDARD FEATURES

- 8 inch Touch-screen with Touch infotainment system
- Jaguar Sound System (180W) with 6 speakers
- Emergency Brake Assist
- Active Sports Exhaust

KEY OPTIONAL FEATURES

- Eight-speed Quickshift automatic or six-speed manual transmission
- 8 inch Touch-screen with Touch Plus infotainment system
- Meridian™ Surround Sound System (770W) with 12 speakers
- Adaptive Dynamics

FAST FACTS: 3.0 LITRE V6 340PS SUPERCHARGED PETROL COUPÉ



CO₂ emissions
from 199g/km



0-100km/h 0-60mph
5.3sec 5.1sec



Top speed (km/h/mph)
260/161



Engine Capacity
2,995cc



Fuel economy*
8.4l/100km 33.6mpg



Dimensions** (LHW)
4,482 x 1,311 x 2,042mm



Power (kW/PS)
250/340


Figures are shown for automatic transmission. All information is market and model dependent. Please consult your retailer for availability. Meridian is a registered trademark of Meridian Audio Ltd. *Fuel economy figure combined cycle. **Overall width including mirrors.





I-PACE CONCEPT


Introducing I-PACE Concept, a preview of Jaguar's first ever all-electric car. Available in 2018, it brings zero vehicle emissions technology to a driving experience that is unmistakably Jaguar.


FAST FACTS


 **Range**
I-PACE Concept can offer a range greater than 500km on a single charge.

 **Performance**
Its instant torque, All Wheel Drive capabilities and aerodynamic design enable I-PACE Concept to achieve sports car acceleration, reaching 100km/h in around 4 seconds.

 **Battery**
I-PACE Concept's range is enabled through its high tech Lithium Ion battery which has a capacity of 90kWh.

 **Dimensions**
5 full seats
Rear load space: 530 litres
Front luggage compartment: 36 litres
Footprint: 4680mm(l) x 1560mm(h) x 1890mm(w)

 **Charging**
I-PACE Concept can achieve 80% charge in 90 minutes with a 50kW DC rapid charger.

 **Power**
With 700Nm of instant torque available, I-PACE Concept's two electric motors together produce 400PS of power.

All figures for acceleration, power, speed, range and charging are manufacturer's estimates on best information available at publishing. Production vehicles will be tested and certified prior to release, with official figures available prior to any customer order.

GETTING IN TOUCH IS EASY

If you're curious to hear more about what we can offer, don't hesitate to get in touch with the specialist in your region, for any query.

INTERNATIONAL

Kevin Mellor

Diplomatic and Embassy
Sales Strategy Manager

+44 (0) 1920 885126
diplomat@jaguar.com

UNITED KINGDOM

Sue King

Diplomatic, Military
and Tax Free Sales Manager

+44 (0) 1926 649205
sking40@jaguarlandrover.com

US & CANADA

Erin Goward

Fleet & Business Sales Manager

+1 (0) 201 760 8505
egoward@jaguarlandrover.com

EUROPE

Tim Carter

Diplomatic, Military and Special
Vehicle Sales Manager Europe

+44 (0) 7876 875604
tcarter3@jaguarlandrover.com

OVERSEAS

Simon Monks

Fleet & Business Sales
Manager Overseas Region

+44 (0) 24 76564875
smonks@jaguarlandrover.com

JAGUAR.COM/DIPLOMATICSALES

JAGUAR.COM/DIPLOMATICSALES

IMPORTANT NOTICE

Jaguar Land Rover Limited is constantly seeking ways to improve the specification, design and production of its vehicles and alterations take place continually. While every effort is made to produce up-to-date literature, this brochure should not be regarded as an infallible guide to current specifications, nor does it constitute an offer for the sale of any particular vehicle. Distributors and retailers are not agents of Jaguar Land Rover Limited by any express or implied undertaking or representation. Comparisons are based on manufacturer's own data and testing. Jaguar Land Rover Limited. Registered Office: Abbey Road, Whitley, Coventry, CV3 4LF, United Kingdom. Registered in England Number: 1672070 jaguarlandrover.com